



DERWICK ASSOCIATES S.A.

# GE LM6000





DERWICK ASSOCIATES S.A.

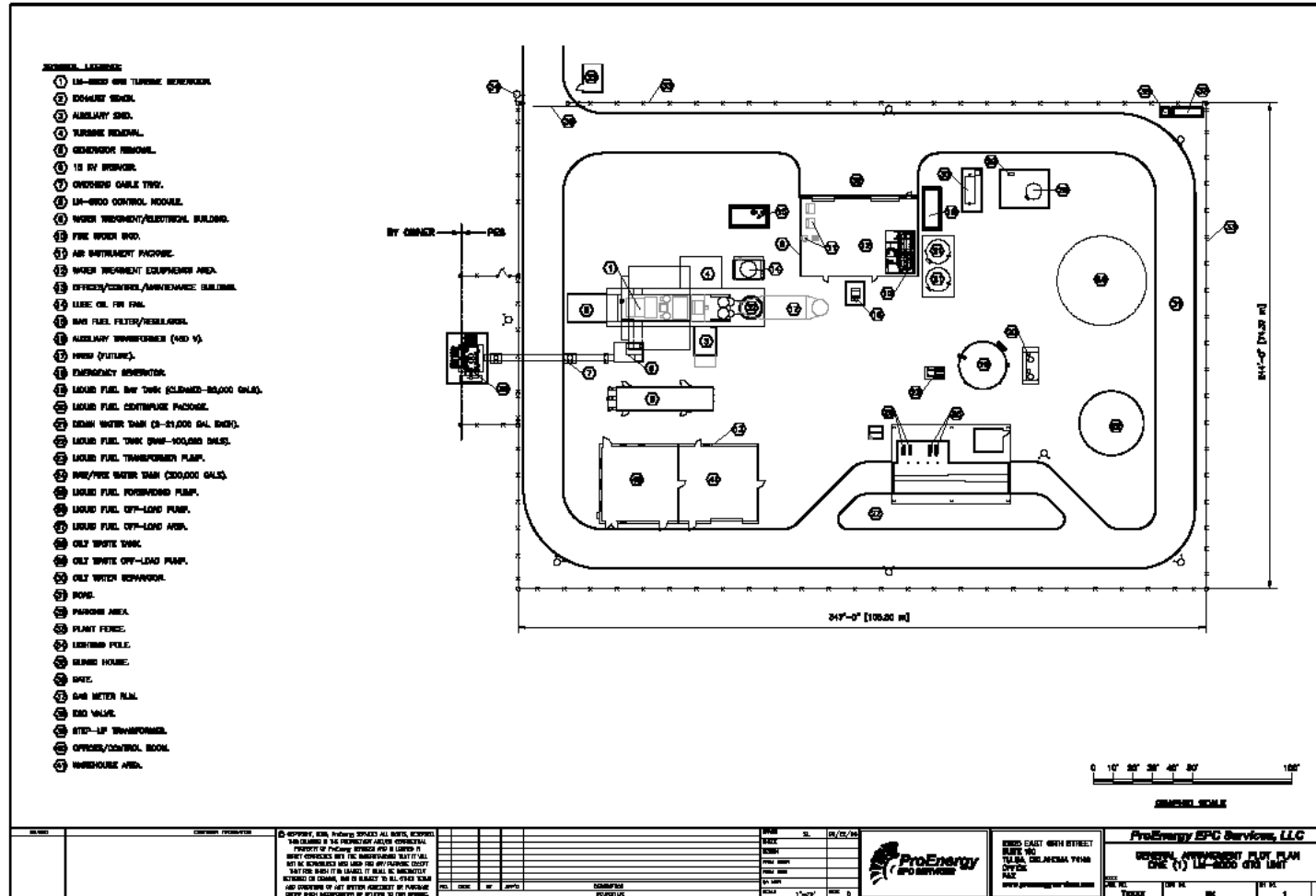
# GE LM6000

|                                   |                 |                 |
|-----------------------------------|-----------------|-----------------|
| • <b>Simple Cycle Performance</b> | 60Hz            |                 |
| • <b>Serial Numbers</b>           | 191-761/191-645 |                 |
| • <b>Output</b>                   | 48 MW           |                 |
| • <b>Heat Rate</b>                | 8434 Btu/kWh    | (8916 kJ/kWh)   |
| • <b>Shafts</b>                   | 2               |                 |
| • <b>Exhaust Flow</b>             | 295 lb/sec      | (134 kg/sec)    |
| • <b>Turbine Speed</b>            | 3600 rpm        |                 |
| • <b>Exhaust Temperature</b>      | 826°F           | (441°C)         |
| • <b>Model Designation</b>        | LM6000PC        |                 |
| • <b>Fuel Consumption</b>         | 244.97          | (Liters/Mw-hr)  |
| • <b>Liquid</b>                   | 2903            | (Gallons/Hr)    |
| • <b>Gas</b>                      | 391,279         | (Cubic feet/Hr) |

# DERWICK

DERWICK ASSOCIATES S.A.

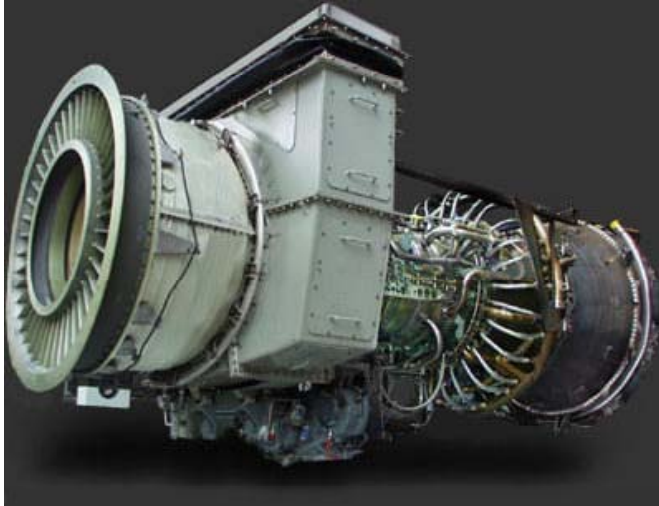
# GE LM6000





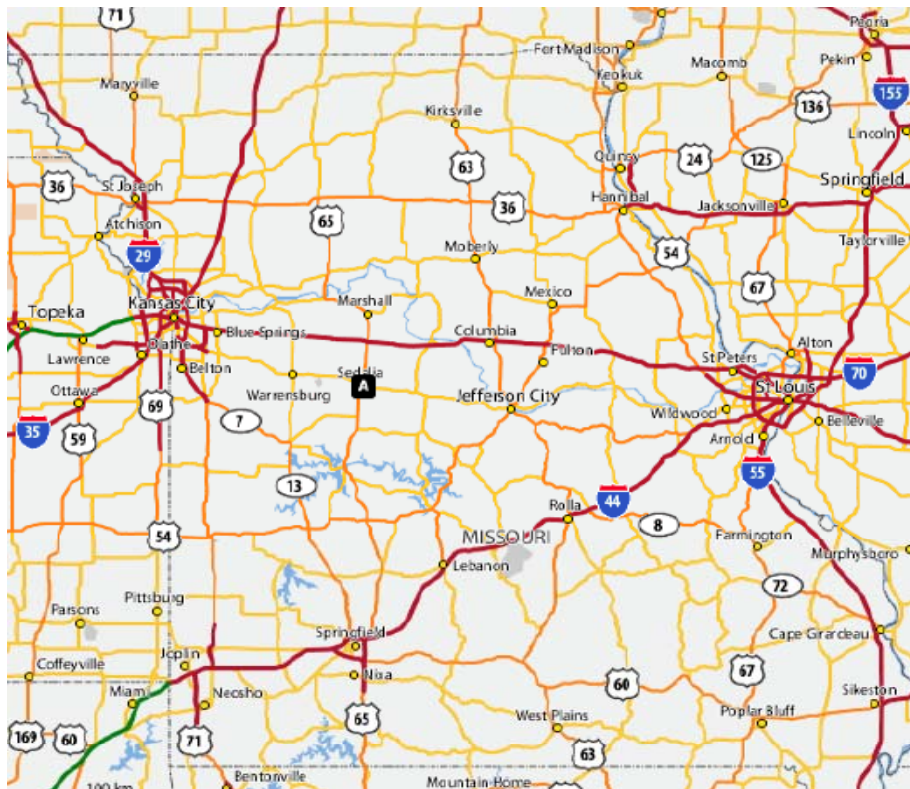
DERWICK ASSOCIATES S.A.

# GE LM 6000



# GE LM 6000

1 LM6000 Sedalia, Mo



1 LM6000 In Houston

